



FACING THE CHANGE –

an archive as compass to the future



GLANCING IN THE PAST...

...HELPS TODAY
SHAPING TOMORROW!



Archiv Emschergenossenschaft



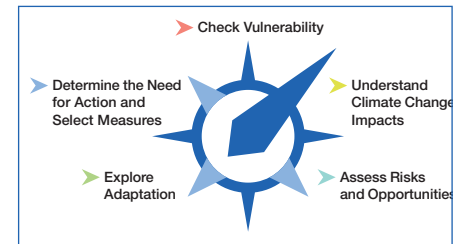
A COMPASS TO FACE CLIMATE CHANGE – THE RIVER ARCHIVE AS PLANNING TOOL

Our aim is a climate-proof region. For that you need some directions: a compass. The european project [Future Cities](#) has developed an „adaptation compass“ that provides help in modules.

The first module checks the vulnerability of the region:

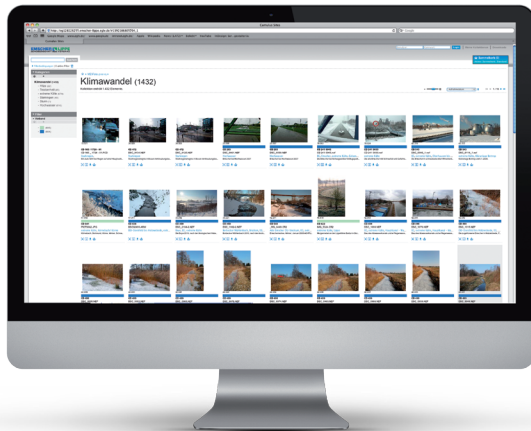
How sensitive is the region? And: **Where** is this dense, complex urban landscape most vulnerable?

To answer these questions **analysing archives is the first step** of the module „Check Vulnerability“.



More information about the adaptation compass:
www.future-cities.eu/project/adaptation-compass

FLOODED LAND – EXTREME WEATHER SITUATIONS CAPTURED IN PICTURES



At a terminal of the exhibition you can click into the full archive of EMSCHERGENOSSENSCHAFT and LIPPEVERBAND to look for more climate relevant pictures.



Archiv EMSCHERGENOSSENSCHAFT



IN WHAT RESPECT IS THE EMSCHER-LIPPE-REGION AFFECTED? PICTURES OF THE EXHIBITION

Climate predictions state that **flooding** and extreme rainfall events are to be expected more often. The RIVER ARCHIVE shows which areas were and are at risk.

Damages caused by flooding have a lasting effect. The RIVER ARCHIVE raises awareness about measures that have been taken in the past and may be optimised in future.

Pumping stations are essential buildings to retain the existing polder areas. They must be protected permanently against flooding. The RIVER ARCHIVE shows the most sensitive locations.



Körnebach, Dortmund-Scharnhorst, 1922

more pictures in the exhibition: 62, 64, 70, 71, 72, 73, 74



Pumping station Herringer Bach, Hamm, 1958

more pictures in the exhibition: 46, 47



Pumping station Bönen-Bramey-Lenningsen, 1951

more pictures in the exhibition: 22.1. - 22.18

MAKING THIS REGION FIT FOR THE FUTURE IS OUR TASK

The Emscher-Lippe-region has undergone major changes due to industrialisation and structural change.

River systems have been canalised, areas were sealed extensively. The landscape has no buffer any more against extreme weather situations.

But also about 4 million people live in the catchment areas of Emscher and Lippe. The region is as vulnerable as deserving protection – its functioning and living quality must be sustained.

The ecological enhancement of river systems contributes to reduce the occurring

effects of climate change. In a long-term task EMSCHERGENOSSENSCHAFT and LIPPEVERBAND rebuild the existing ecosystems as nature-like as possible.

The adaptation compass provides help on this track.

The Emscher at lake Phoenix in Dortmund is an example how to create waterbodies climate adapted and fit for the future.

The first step is “reading” archives correctly: The river archive, but also press-, photo-, municipality’s- and museum’s archives help to understand the history of a region, to create a future worth living in.



Hans Blosser



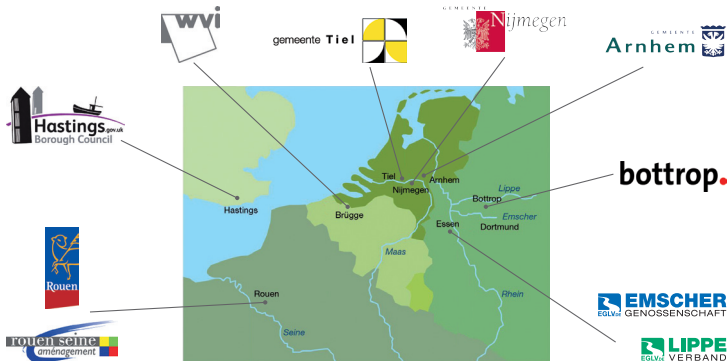
THIS REGION IS WORTH LIVING IN.

EMSCHERGENOSSENSCHAFT AND
LIPPEVERBAND TAKE GOOD CARE
TO KEEP IT THAT WAY.



THE EXHIBITION IS SUPPORTED BY THE FUTURE CITIES PROJECT

The project is funded in the framework of the European programme INTERREG IV B NWE.



Responsible for the content of the booklet:

EMSCHERGENOSSENSCHAFT, Kronprinzenstraße 24, DE - 45128 Essen

Find more information about creating future city regions:

www.future-cities.eu

