

Twinning Event - Hastings Climate Change Vulnerability Assessment and Map Table

Jane Dodson
Climate Change Project Officer
Hastings Borough Council

Date: 31st May – 1st June in Hastings
Aims

- To demonstrate the Map Table, to our Councillors, planners, and community development professionals, also neighbouring municipalities
- To show Hastings map data, including thermal data and overlay some projected impacts of climate change, as shown in UKCP09 and as indicated by the Environment Agency
- To discuss the application of the table, the heat map of Arnhem and the climate change regional vulnerability study in more detail with our partners from the Netherlands
- The MapsUp team brought 3 tables to Hastings, and worked hard to incorporate as much of UK GIS data as possible prior to the event.
- conduct site visits to the Eco-retrofit and Alexandra Park

Agenda for three showcase sessions

**Introduction to the day
Hastings Borough Council**

**How the City of Arnhem have used the map table
Hans van Ammers**

**How the MapTable works
Jaap de Kroes**

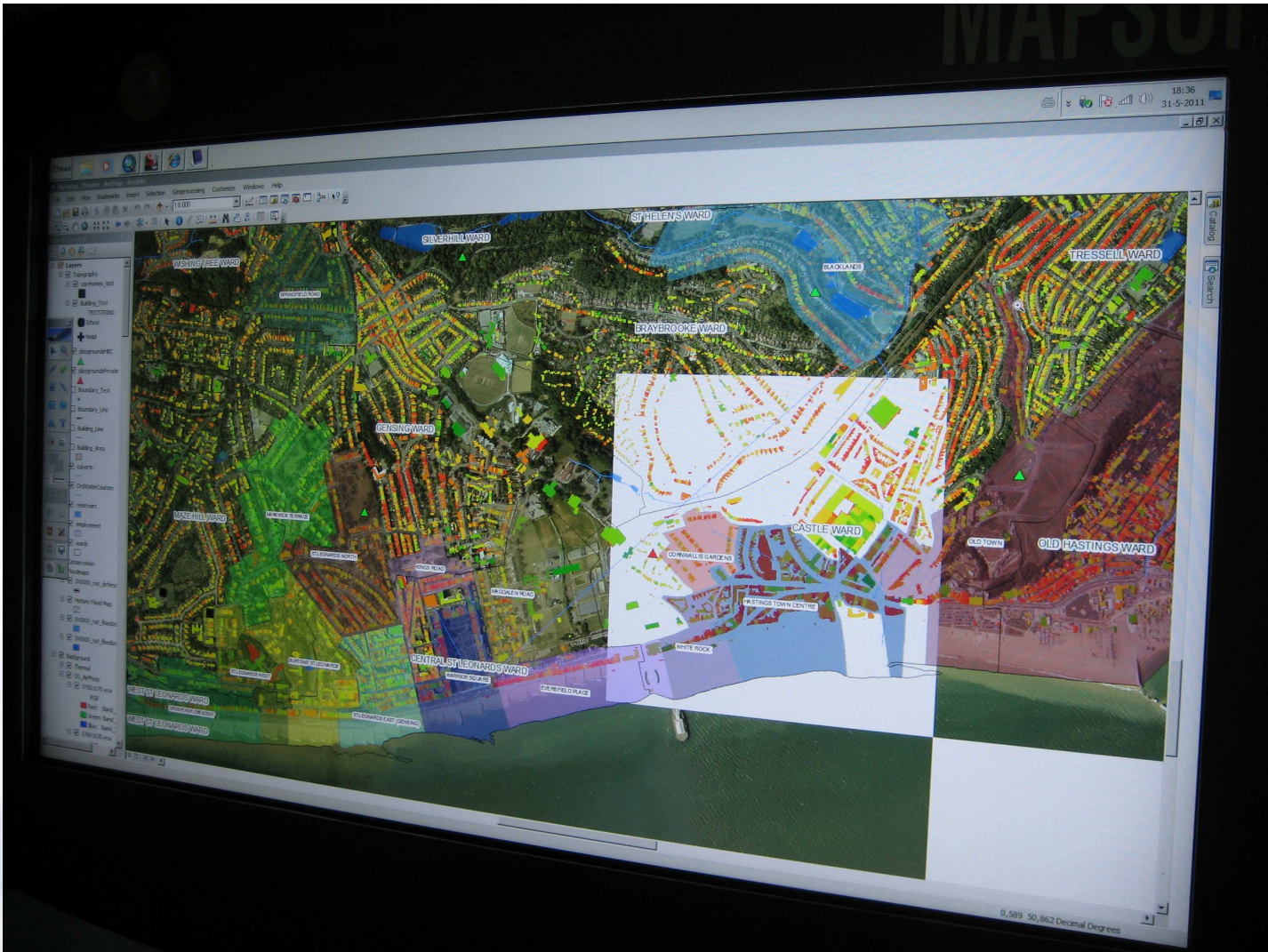
Group work and feedback (see handout)

**More detailed look at the energy model used in Arnhem
Albert Anijs**

Group work and feedback sessions



Hastings local heat map showing wards



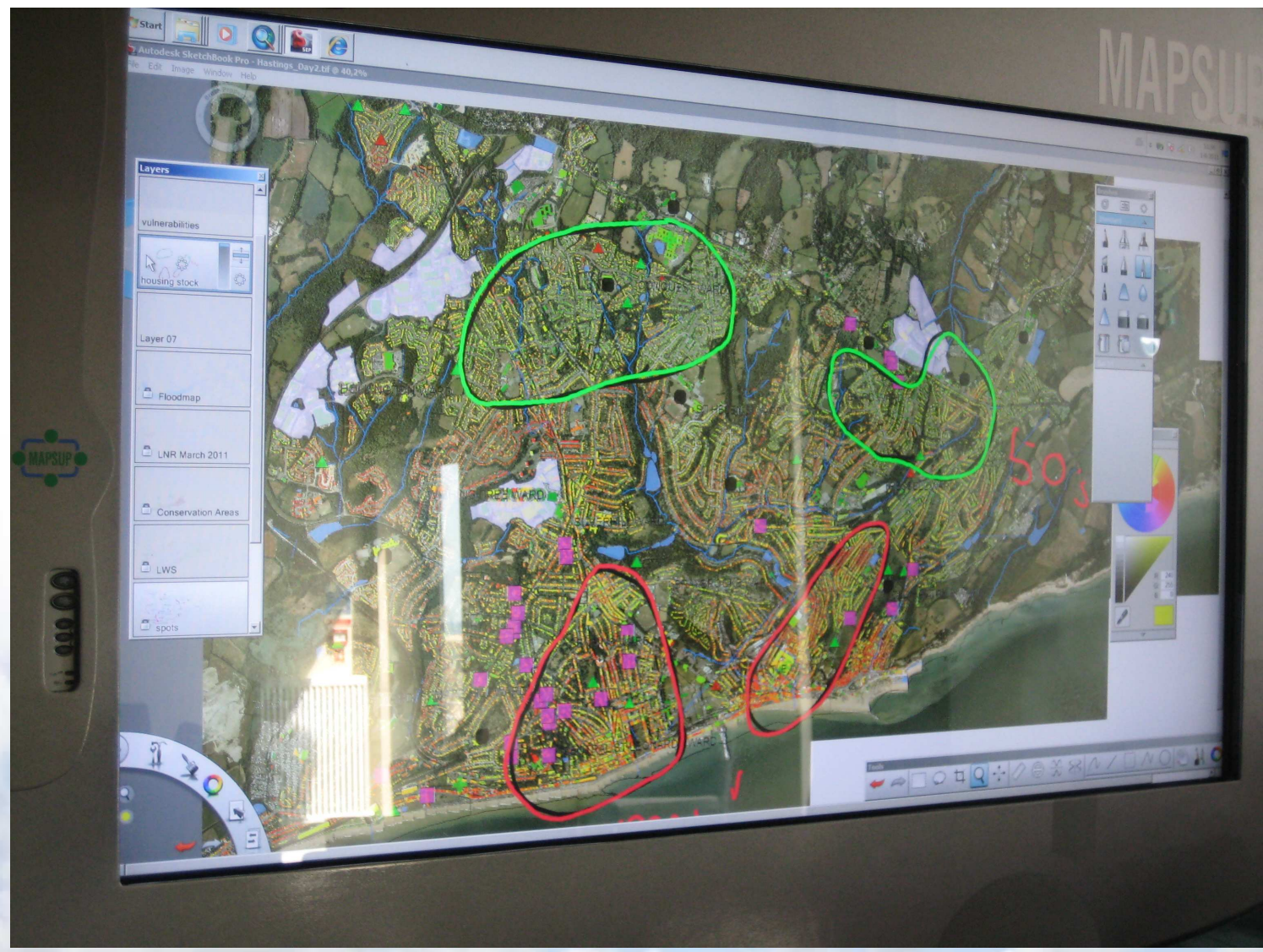
What our Netherlands partners gained:

“During the twinning in Hastings we could present our energy strategy and the current results of the Heat study in Arnhem.

We received very valuable comments and recommendations about our own activities within the Future Cities project and the use of the MapTable in these activities.

We got also valuable information about the Vulnerability Study performed in the region around Hastings (South East Region) that will be of great help in upscaling the heat study to the Arnhem Nijmegen City Region”. Future Cities Twinning Report

Showing housing stock in conservation areas, heat loss



What we, in Hastings gained:

- In depth examination of the ways in which the MapTable can be used to enhance spatial planning elements of climate change adaptation work, and can have multiple applications in terms of housing, project planning and policy consultation
- Issues around use of regional data at the local level were raised and fully discussed, and ways in which we can
- Showing possible impacts of sea level rise, temperature and rainfall changes and the erosion of the coastline proved very powerful

What attendees thought...

“Brilliant”

“Challenging”

“Thought-provoking”

“All our planning committees should use one of these” Deputy Leader

“Lots of potential - it’s the software behind that really excites me” – Housing Renewal Officer

“Useful for cross border working” Rother District Council



Site Visits

Alexandra Park has a number of water courses flowing under it, and storm run-off water is pumped into an outfall on the coast. We were able to show our partners this in reality with a guided tour by a Ranger.

The visit to the eco-retrofit demonstrated the type of project we will need to replicate in Hastings, as we have limited capacity for new build and we must meet housing demand and national and local reduction of emissions targets.

It also demonstrated the social element of the project, working with long-term unemployed - some of whom are now in work thanks to the participating in the project.

Alexandra Park



Eco-retrofit 12 Cambridge Gardens



www.hastingstrust.org
Training Manual, Videos



The project has attracted visits from Local Authorities in the South East and Government bodies, including the then Secretary of State for Communities accompanied by the Member of Parliament for Hastings...

...And now, the Future Cities partners!

In all the project has had 150 visitors, trainees and contractors.

Approx 70% existing housing stock in Hastings and St Leonards is in a Conservation Area

As the UK Government focuses upon climate change and the need to tackle 'hard to treat' properties, as well as the need to up-skill the long term unemployed, this project has environmental, economic, and social benefits

Impact

“I could see this being really useful for planning our renewable energy initiatives and targeting areas where we can achieve the major CO2 reductions eg hard to treat properties, spaces that are conducive to large scale interventions, addressing the water need, creating energy hubs, etc”

“brilliant, challenging, inspirational and thought provoking”

“This would be great for a number of consultations, pooling/coordinating data layers, corporate forward planning and cross organisation collaboration”

The way ahead

- A climate map
- Cross departmental project development
- A meeting to take forward recommendations arising from the twinning with relevant officers, elected Members and neighbouring municipalities
- Agree funding

