

## DETERMINE THE NEED FOR ACTION AND SELECT MEASURES

This module represents the linkage between the catalogue of adaptation options, the problems they address and the need for action which was identified.

The previous information and assessment steps made in the modules are taken into account resulting in a list of core problems and problem areas which are matched with suitable adaptation measures. Additionally, information is provided on how these areas can be identified.

To determine the core problems and problem areas, the appraised risks and opportunities are ranked and “hot spots” are identified: The result is a list of core problems which are to be addressed by adap-

tation measures, e.g. urban structures which are likely to heat up too much in an area where many older people live.

In the list of adaptation measures, suitable actions and combinations of measures are given which will help mitigate the core problems.

### **Spotlight: Developing Urban Climate Recommendations in Arnhem**

Mapping the city climate of Arnhem related to overheating is one step, determining the consequences of this diagnosis is the second step needed. For this the city of Arnhem looks into the characteristics or



*In the Southern part of Arnhem the shopping centre Kronenburg and the surrounding residential neighbourhood are a “climatic hot spot”: Long buildings block ventilation, parking without shading, lack of green space in residential area, high roof temperatures on shopping centre in summer.*

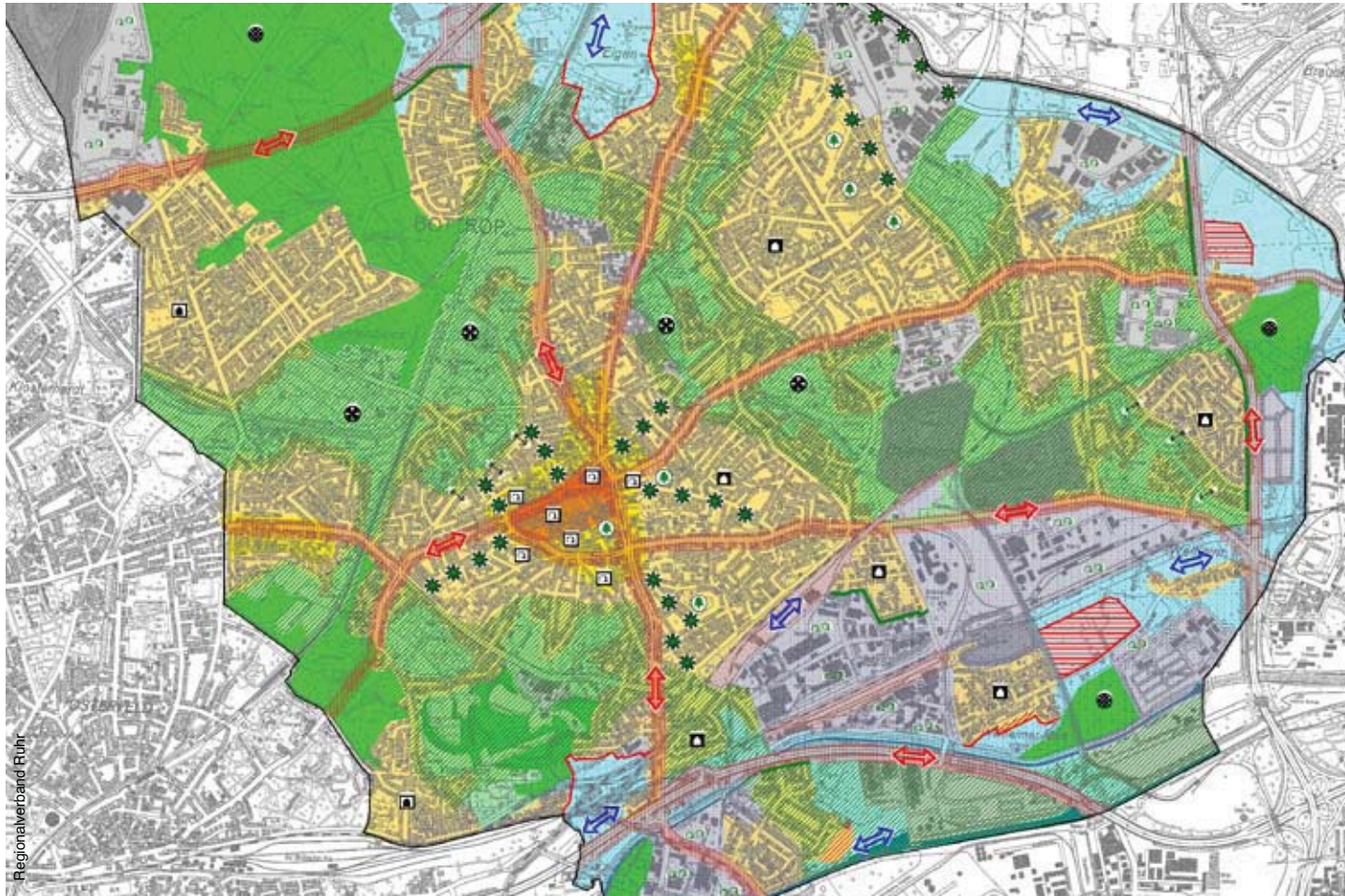




## SELECT MEASURES

land use of each “heated up” area to determine whether it may lead only to uncomfortable situations or to serious health risks for certain social groups. The aim is to determine the urgency to act. This will lead to a series of actions, such as highlighting areas that should be

adapted to prevent serious health risks for its users and inhabitants, or building restrictions in areas to prevent building schemes that block cooling winds. Further actions comprise adaptive measures to improve the human comfort situation.



Example urban climate recommendation map of Bottrop, Germany; Recommendations are given for the protection of compensation areas and airflow corridors – e.g. further buildings prohibited and building restrictions – and for the improvement of climatic conditions: e.g. development and extensions of green areas (streets, walls, roofs, courtyards).

