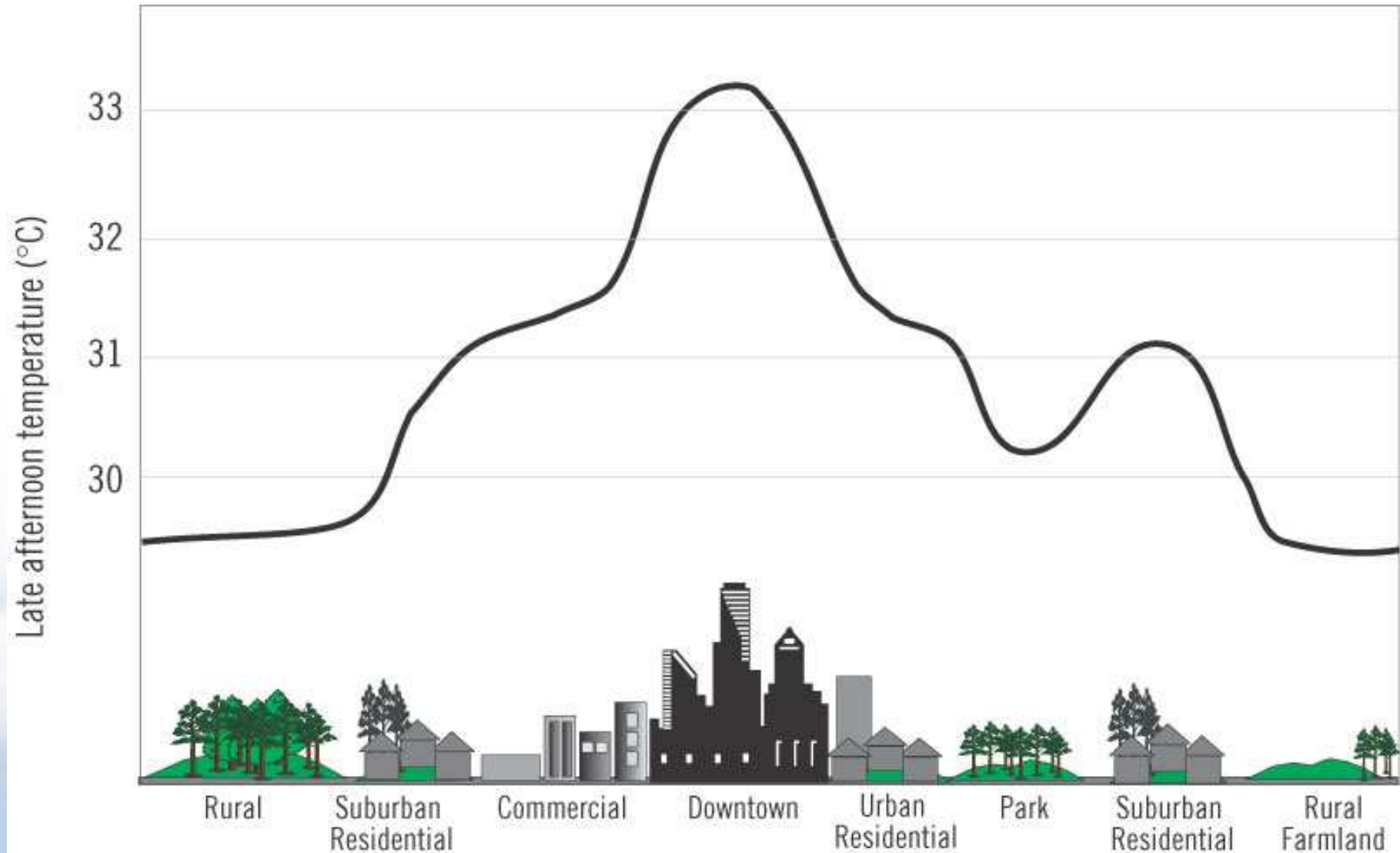


The Urban Heat Island effect



The 'heat study' in the Arnhem Nijmegen City Region

1. Do we have heat-islands in the City Region?

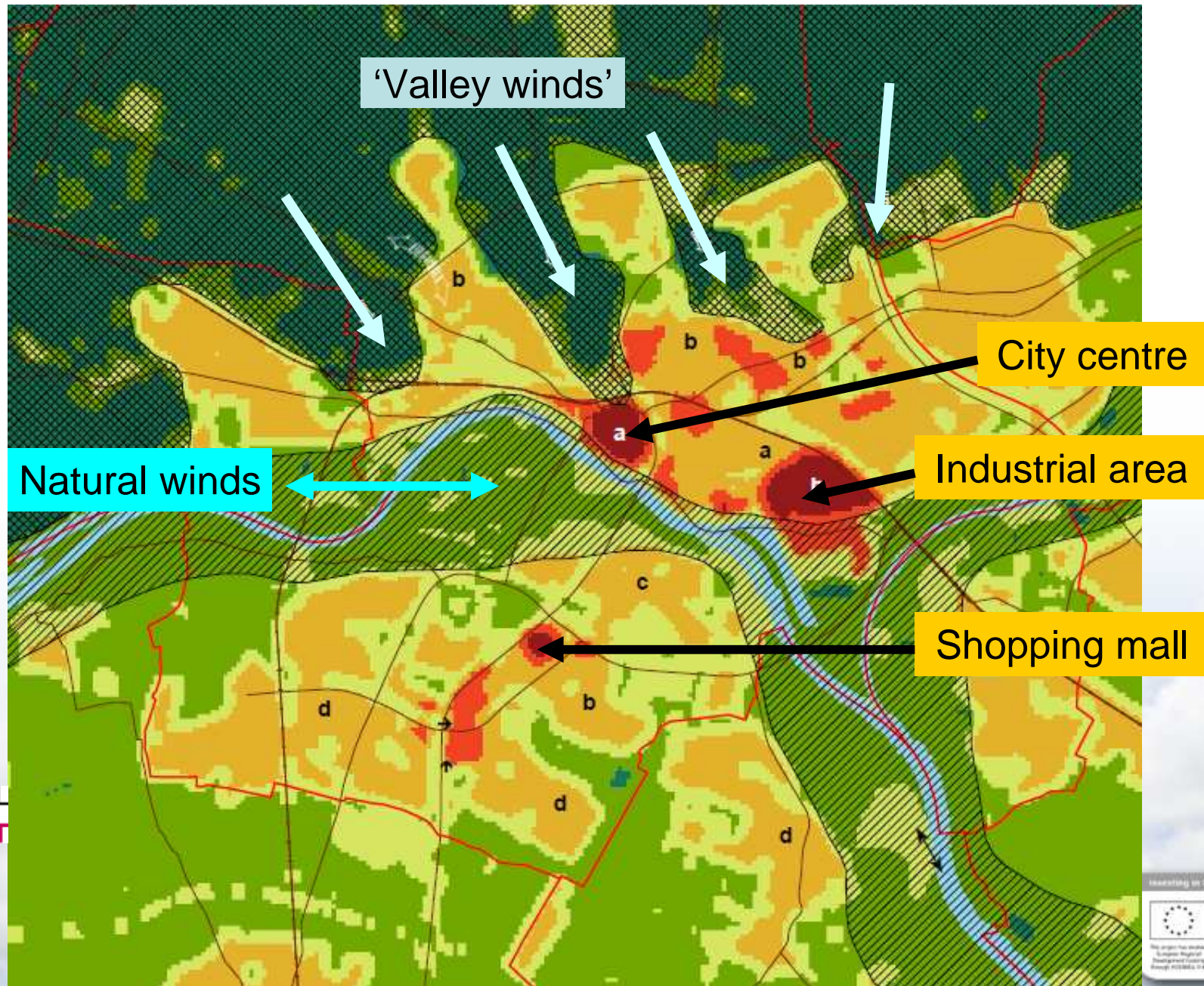
2. If so ... what is the effect of these 'warm islands'?

Is there an urgency to act regarding climate change or even now?

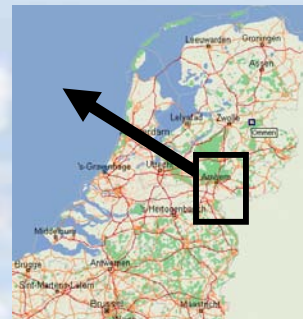
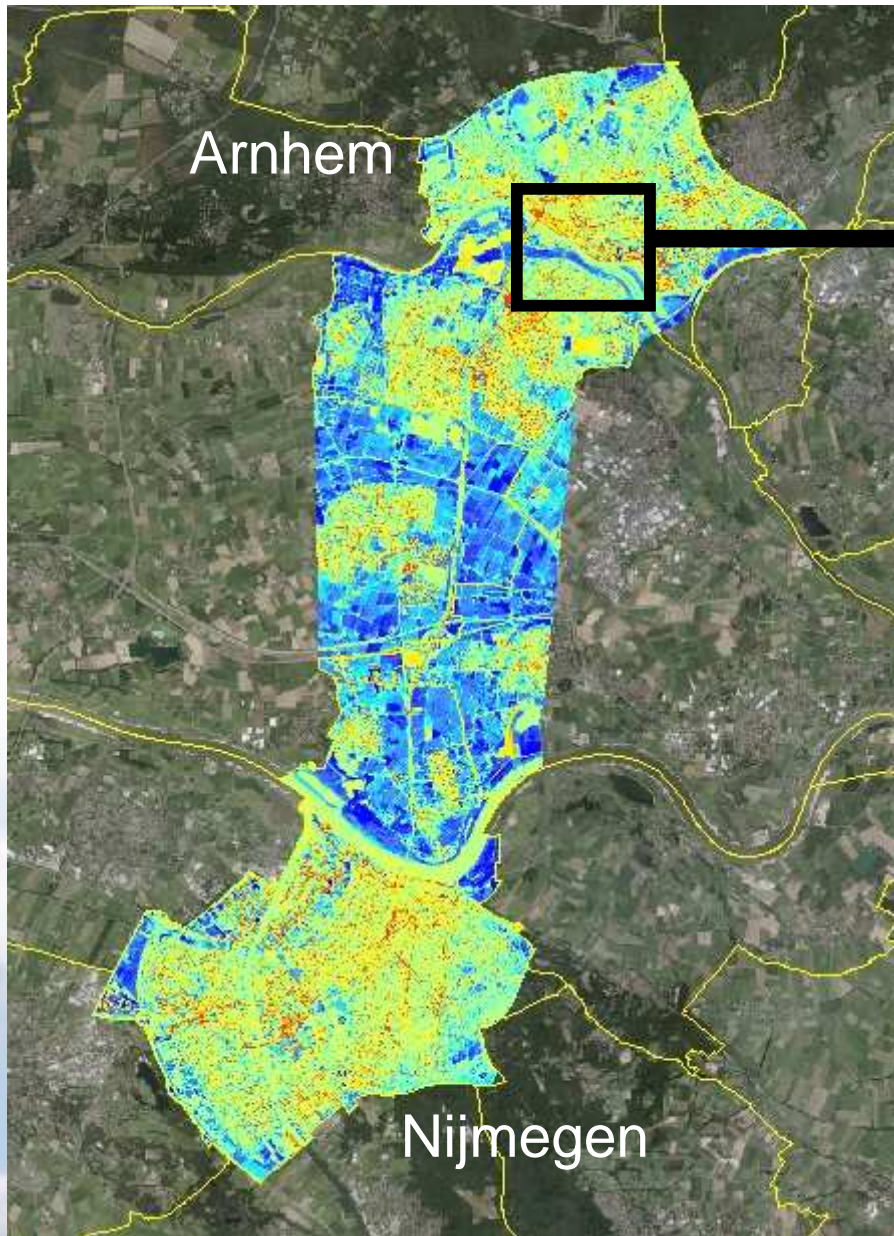
3. What measures are the most (cost)effective?

Focus in on three levels - the regional scale, local scale and the scale of a district or project area

The first Heat map of the City of Arnhem (NI)



The 'Heat scan' of the City Region



August 6, 2010, evening situation



The steps to be taken

- Translating Heat map into 'Heat attention map' → input for our Structure Vision and projects
Special focus on possible health risks – in the future and even now
- Mapping City of Nijmegen and finally all 20 municipalities in the City Region
- Setting up a toolbox with (cost)effective measures to reduce overheating
→ input for the Future Cities Climate Adaptation Compass
- Further study:
 - More climate-bike measurements in 2011
 - Investigating the intensity of the valley winds in Arnhem
 - Investigating the link with ventilation and air quality